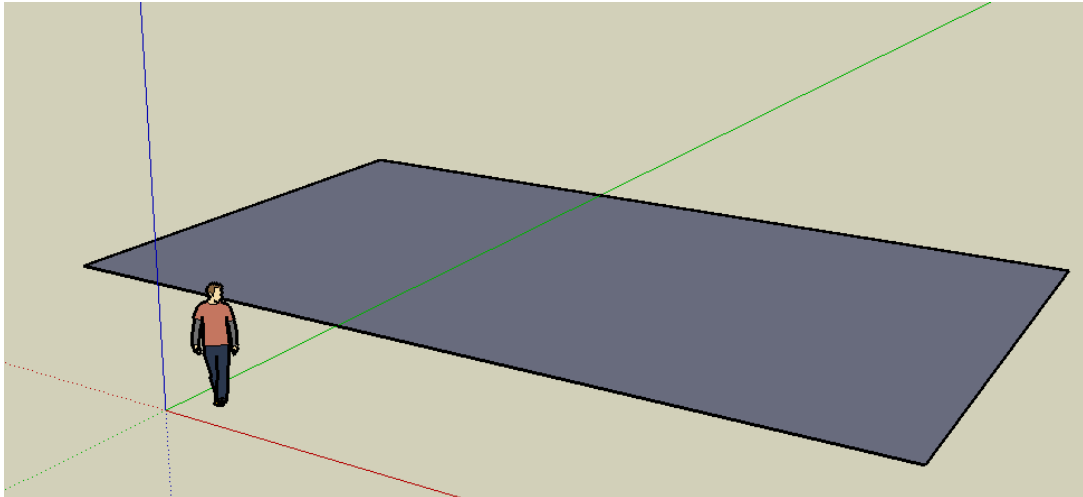


3D modelling with Google Sketchup

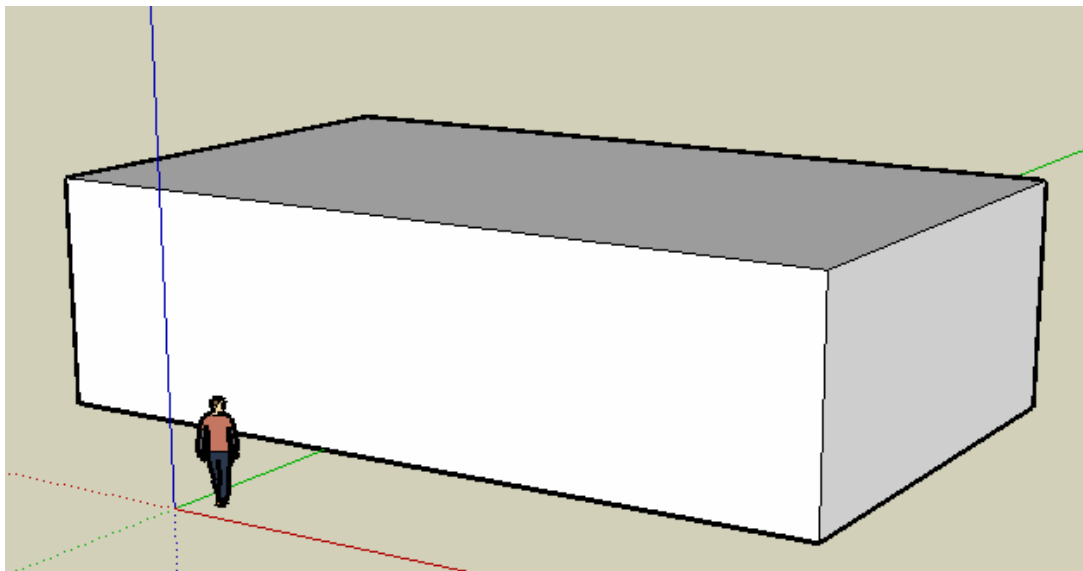


We are going to draw a simple house.

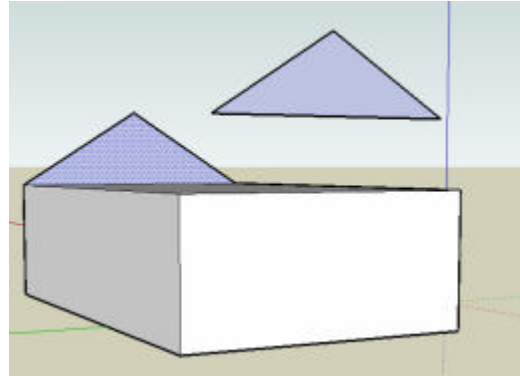
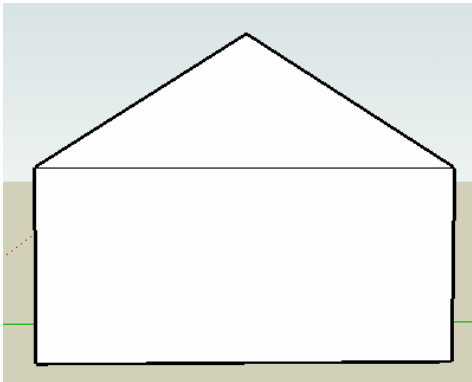
Start off by drawing a rectangle for the base of the house. Select the **rectangle** tool and click and drag to draw.



Now select the **Push Pull** tool to turn the rectangle into a box. Just click on the middle of the rectangle and drag it up.

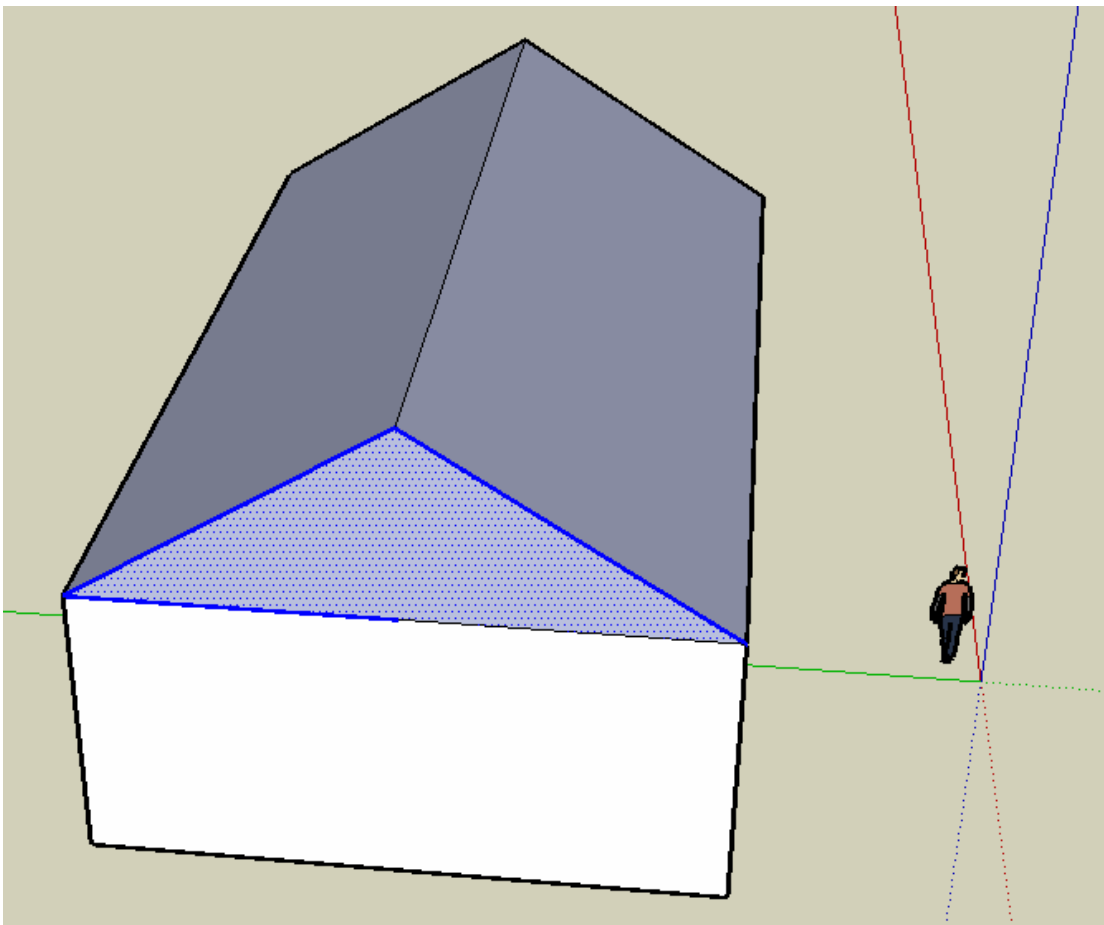


Now draw a triangle for the gable end. Use the orbit tool to get a different view, and use the pencil tool to draw your gable end.

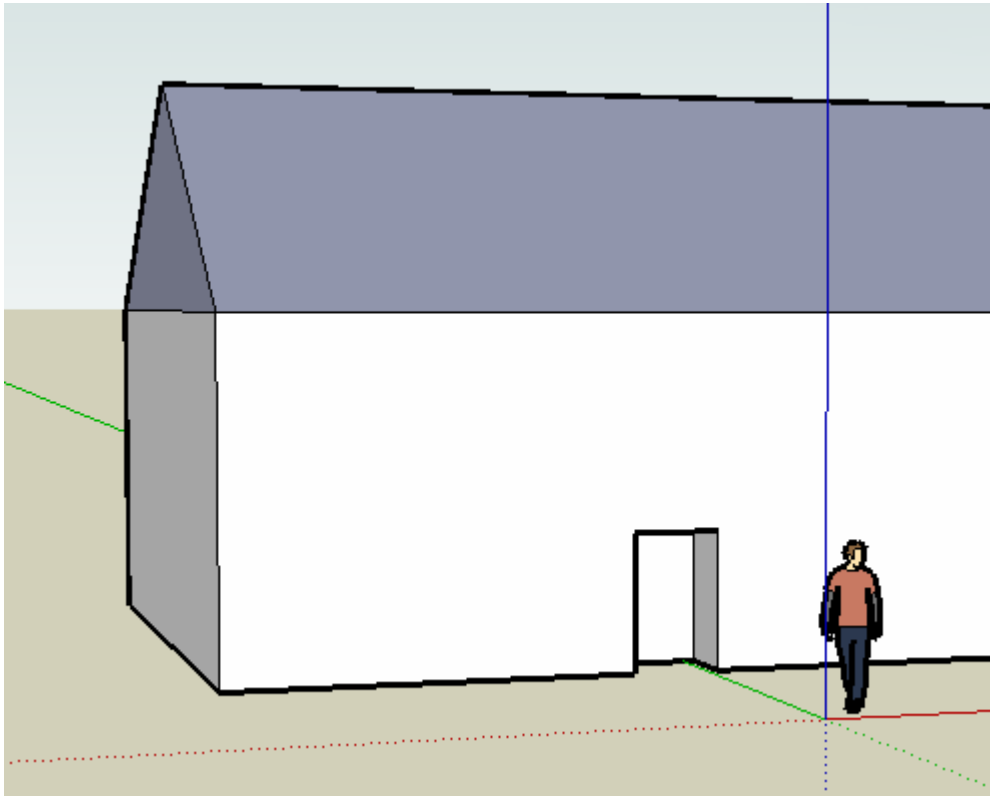


Select your triangle with the arrow tool, then use copy and paste to place it on the other end of the house.

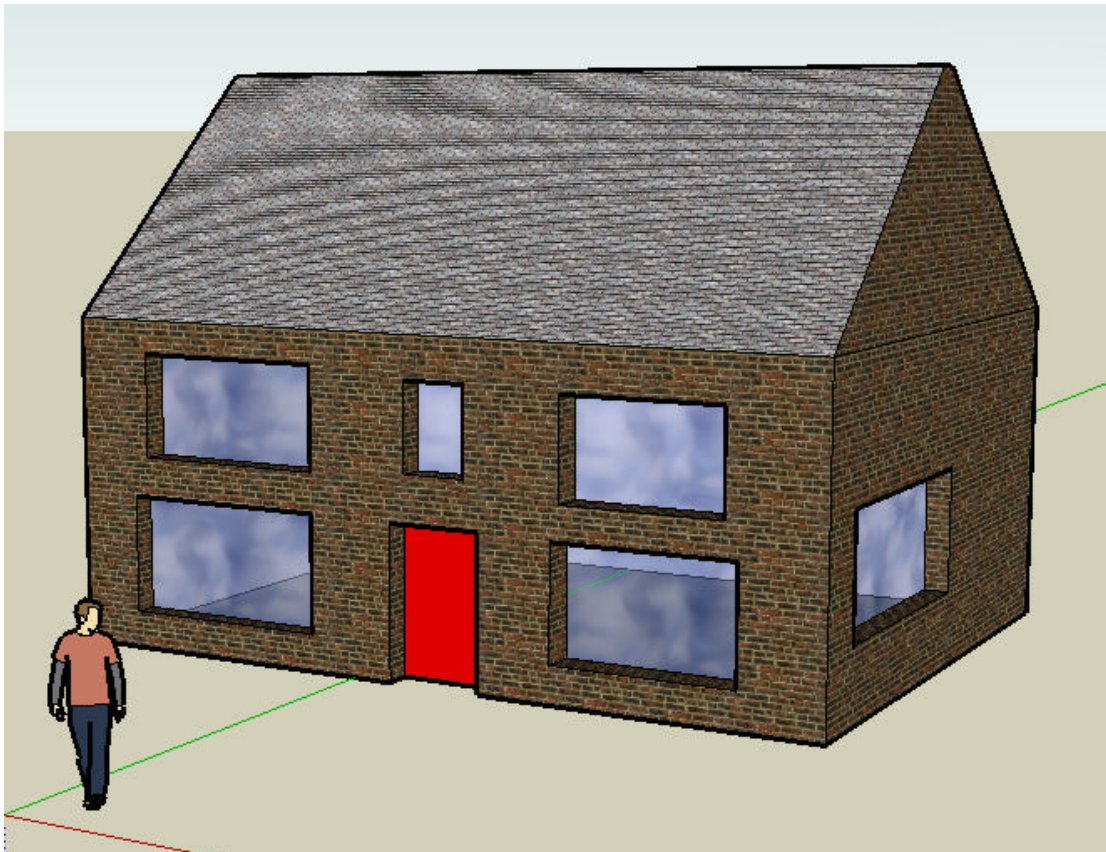
Now use the pencil tool to fill in the roof



Use the rectangle tool and the Push pull tool to draw a door on your house.



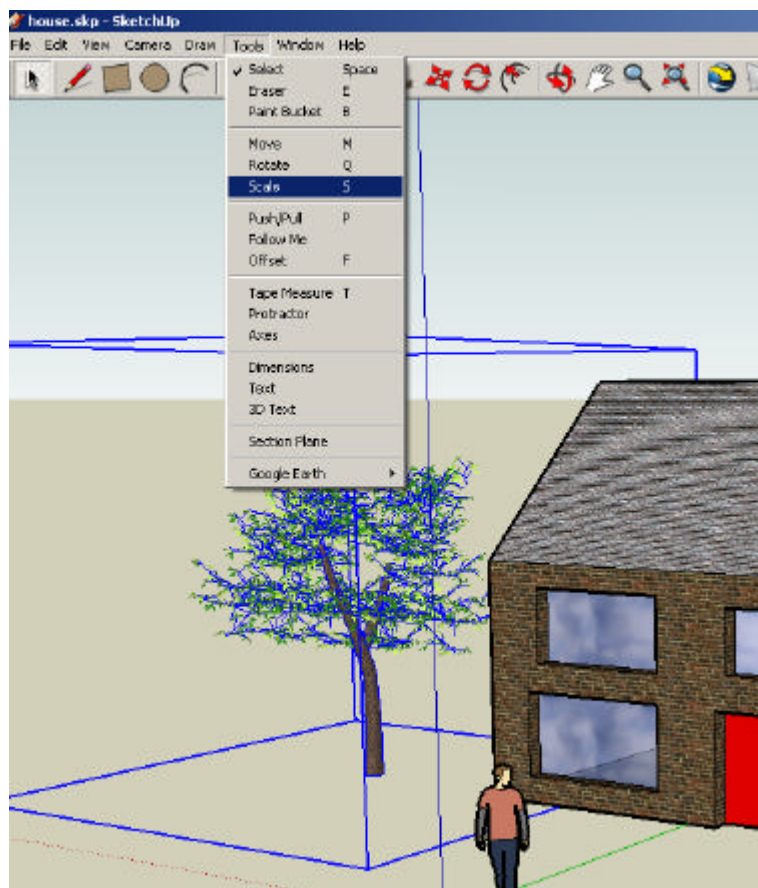
Then add windows and used the Paint Bucket tool to add textures.



You can import models from Google using the **Get Models** tool



Once you have a model you can move it or scale it from the **tools** menu.



Project:

You have been asked to design a play-house for young children

Use Google Sketchup do produce a 3D model which could be used to show prospective customers what it might look like.

Remember to save your completed model in your E-Folio