

Photoshop Techniques

Zooming in and out:

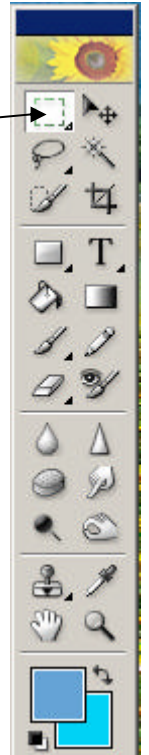
You will often need to see parts of a picture more closely. You can use the **view** menu to zoom in and out or use the zoom tool on the toolbar.



Cropping:

To crop a photograph, choose the crop tool from the toolbar use it to and draw a box around the area of the photo you want to keep, then select **crop** from the **image** menu.

Open the photo titled **crop** and see if you can edit the picture so that it does not include the electricity poles



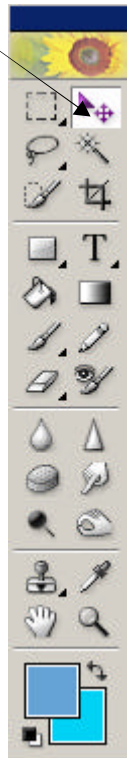
Save your picture.

Copying from one image to another:

You can select part of an image using the **lasso** tool



1. Open the photo titled **boat** and use the lasso tool to draw round it as accurately as you can
2. Choose **Edit Copy** from the menu and then with the picture of the river open choose **Edit Paste** to paste your boat into the river.
3. Use the arrow tool to allow you to change the size of the boat and move it into the correct position
4. Deselect the arrow tool once you are happy with how the boat looks.



5. Save your picture.

Editing an image to remove items:

Open the **cables** photograph.

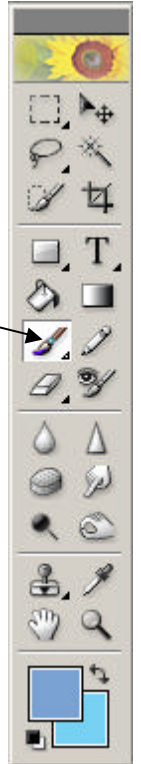
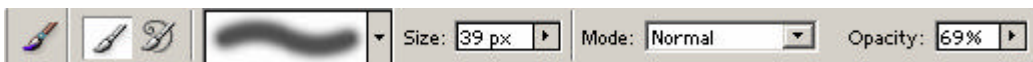
We are going to edit out the cables from the sky



Use the **dropper** tool to change the foreground colour to the same as the sky. Choose a colour near to the cables.

Select the brush tool

Look at the settings for the tool at the top of the screen.



Change the size and opacity (how dark the result will be) of the brush so that you can paint over the cables with a colour as close to the sky as you can manage.

You will have to experiment with the settings and the colour.

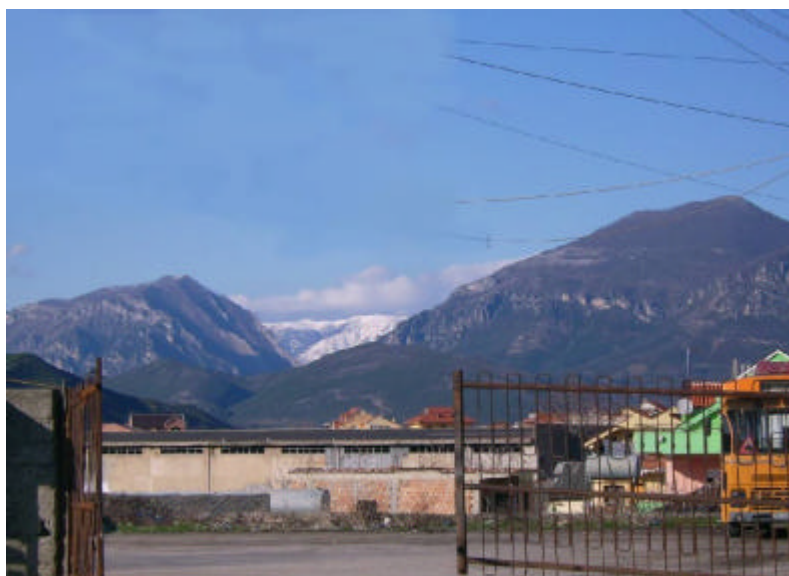
Use the **blur** tool to make the places where you have edited out the cables look like the surrounding sky.



You could also try using the **stamp** tool to copy one area of sky to another



If you make a mistake, you can undo anything you have done by choosing **step backward** from the **edit** menu.

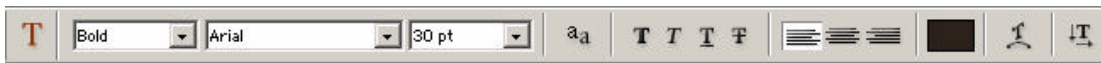
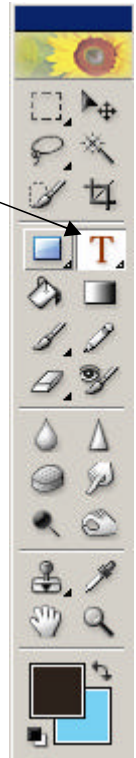


Save your picture

Adding text to a picture :

To add text you need to select the **text** tool from the toolbar

With the text tool selected you can change details like font size and colour from the properties bar at the top of the screen.

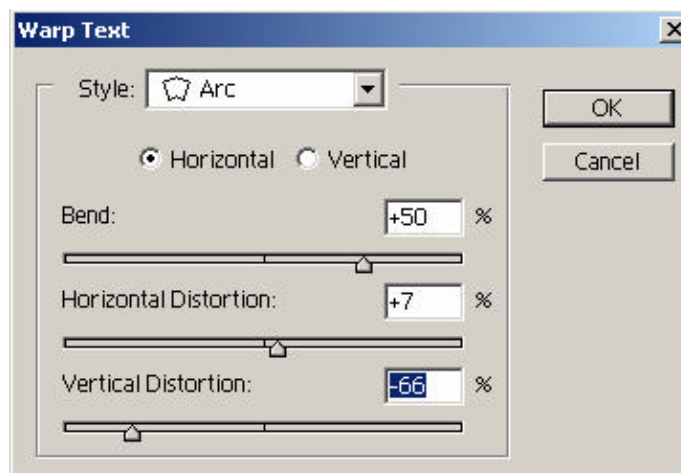


Once you have typed in the text you want on your picture, you can select it with the **arrow** tool and then stretch or move the text the way you want it.

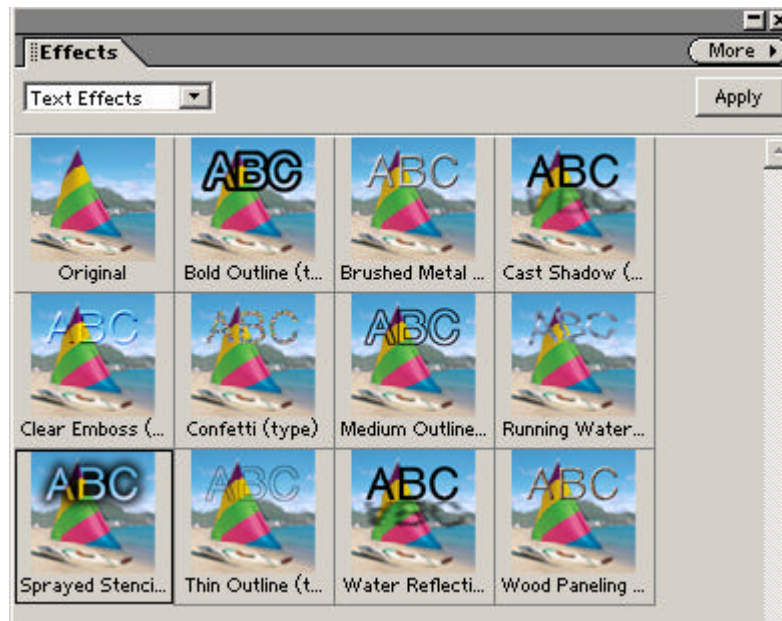


Drag the text using these handles

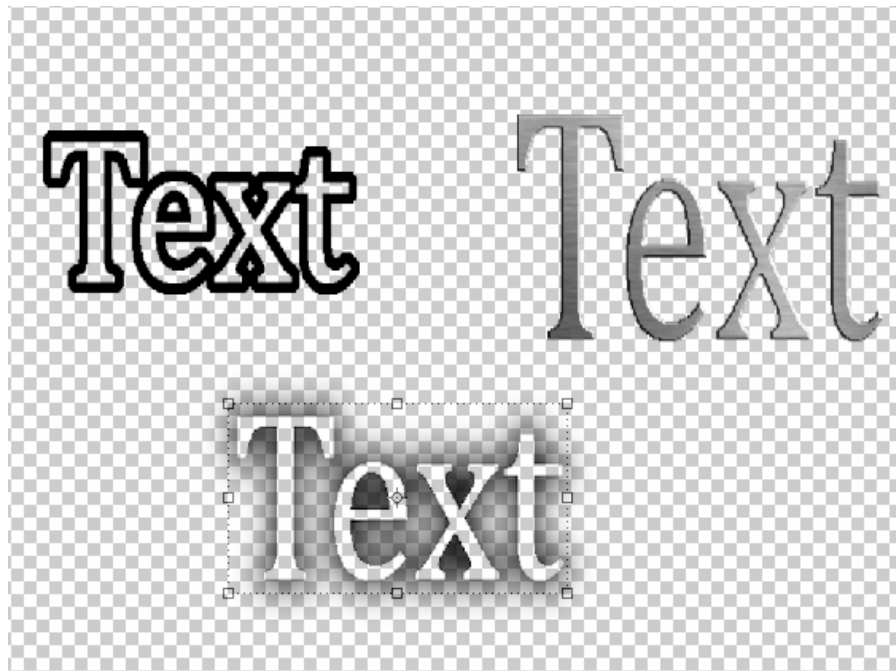
The warp tool allows you to change the shape of the text area



There are also text effects you can apply. Type in your text, select it then choose an effect from the list by clicking on the effects tab then choosing text effects



With the effect you want selected, click on Apply and your text should change to the new style

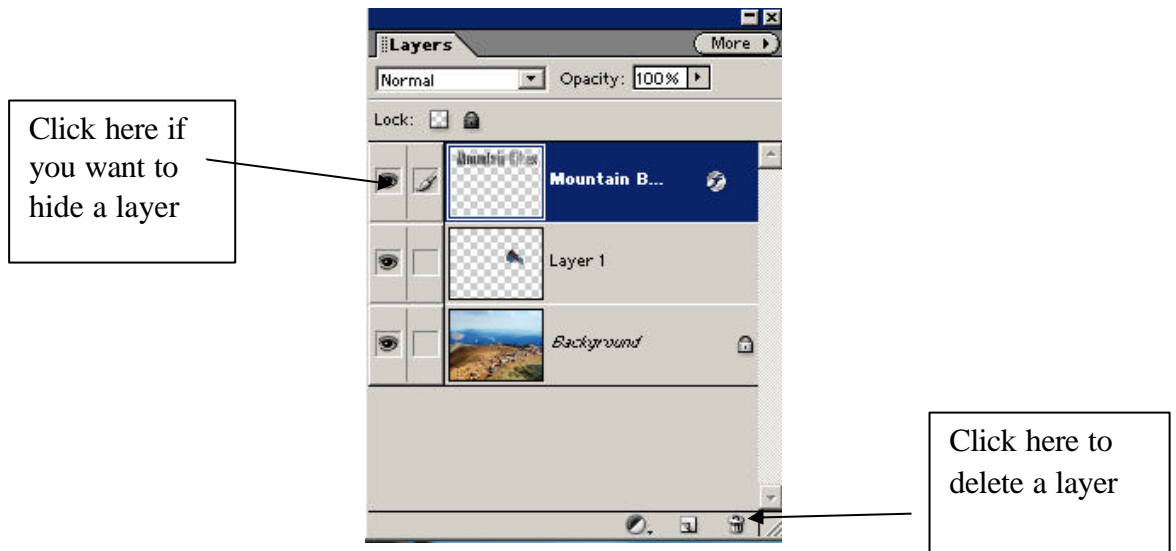


Experiment with the text then put a caption on one of your pictures and save it.

Understanding Layers:

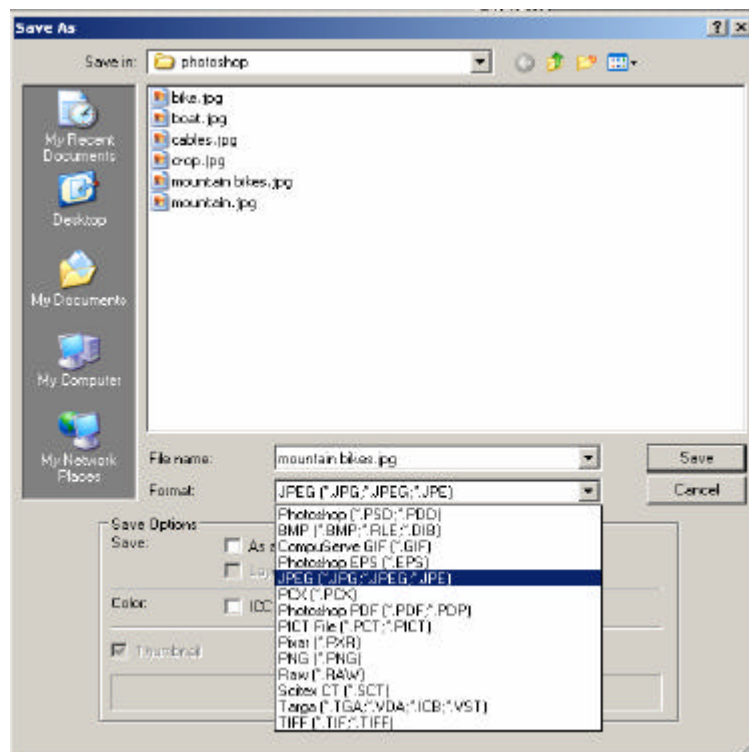
When you add text to a picture, you are adding a new Layer. Layers are like different pictures, one on top of another which you can delete, move above or below each other or hide temporarily if you want to adjust something on another layer.

When you save a finished picture, you join all the layer together into one, but while you are working on a picture you are best to keep them separate because it is much easier to make changes to an individual layer than to edit the whole picture.



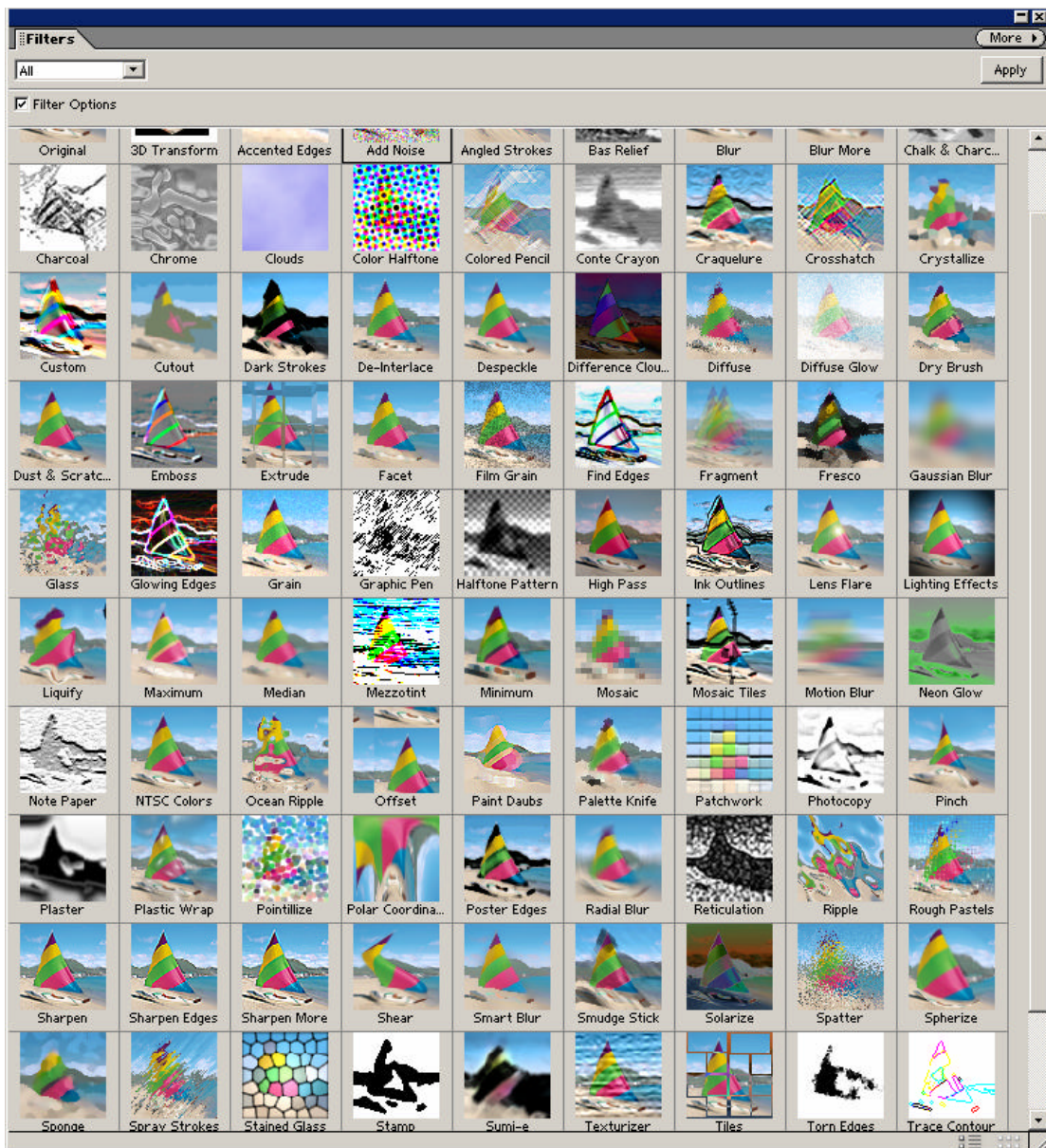
When you save a picture in Photoshop the default format is **PSD**. This format will keep all the layers separate in case you want to edit them individually later.

When you have finished editing a picture and want to save it in a format which other applications can use, save it as a **JPG**



Filters :

There is a wide variety of filters which you can apply to your image. Often these are applied to a background image before placing text or another image in front.



Flickr:

<http://www.flickr.com> is a very good source of pictures if you need backgrounds or other images to manipulate.



Signed in as [ian_king2](#) (2 new) [Help](#) [Sign Out](#)

[Home](#) [You](#) [Organize & Create](#) [Contacts](#) [Groups](#) [Explore](#) [Search](#)

Exercise:

You are going to create an advertisement for mountain bikes

1. Open the file **mountain.jpg** and apply an effect to it to blur it so that it can be used as a background.
2. Open the file **bike.jpg** and use the lasso tool to carefully cut out the bike
3. Copy the bike image and paste it into a new document.
4. Zoom in to edit out any bits of sky you have copied over with the image.
5. Select the bike then copy and paste it onto your background.
6. Add some text to the document
7. Save your finished advertisement.



Now try making a poster or advertisement of your own.